

This picture shows
CT 6,5-10 D

INSTRUCTION BOOK

FARMA T 14 4WD

SERVICE AND SPARE PARTS

TABLE OF CONTENTS

| | | |
|---|--|----|
| 1 | INTRODUCTION | 1 |
| 2 | TECHNICAL SPECIFICATION..... | 2 |
| | 2.1. CONSTRUCTION OF THE TRAILER | 2 |
| | 2.2. SPAREPART LIST FOR TRAILER T14 4WD..... | 4 |
| | 2.3. HYDRAULIC CYLINDERS | 6 |
| | 2.4. TECHNICAL DATA..... | 8 |
| 3 | OPERATING INSTRUCTIONS..... | 9 |
| | 3.1. SAFETY | 9 |
| | 3.2. INSTRUCTIONS FOR SAFE OPERATION | 10 |
| | 3.3. WORKING AT EXTREME CONDITIONS | 11 |
| 4 | MAINTENANCE INSTRUCTIONS..... | 11 |
| | 4.1. SAFETY | 11 |
| | 4.2. LUBRICATION | 12 |

1 INTRODUCTION

This manual deals with the **T 14 4WD** forest trailer and contains all the operating and maintenance instructions you need for using the trailer safely and correctly.

Even if you are experienced user of this kind of equipment, read this manual carefully.

It contains information that enables the trailer to be used efficiently and safely. Make sure that this trailer corresponds to your demands.

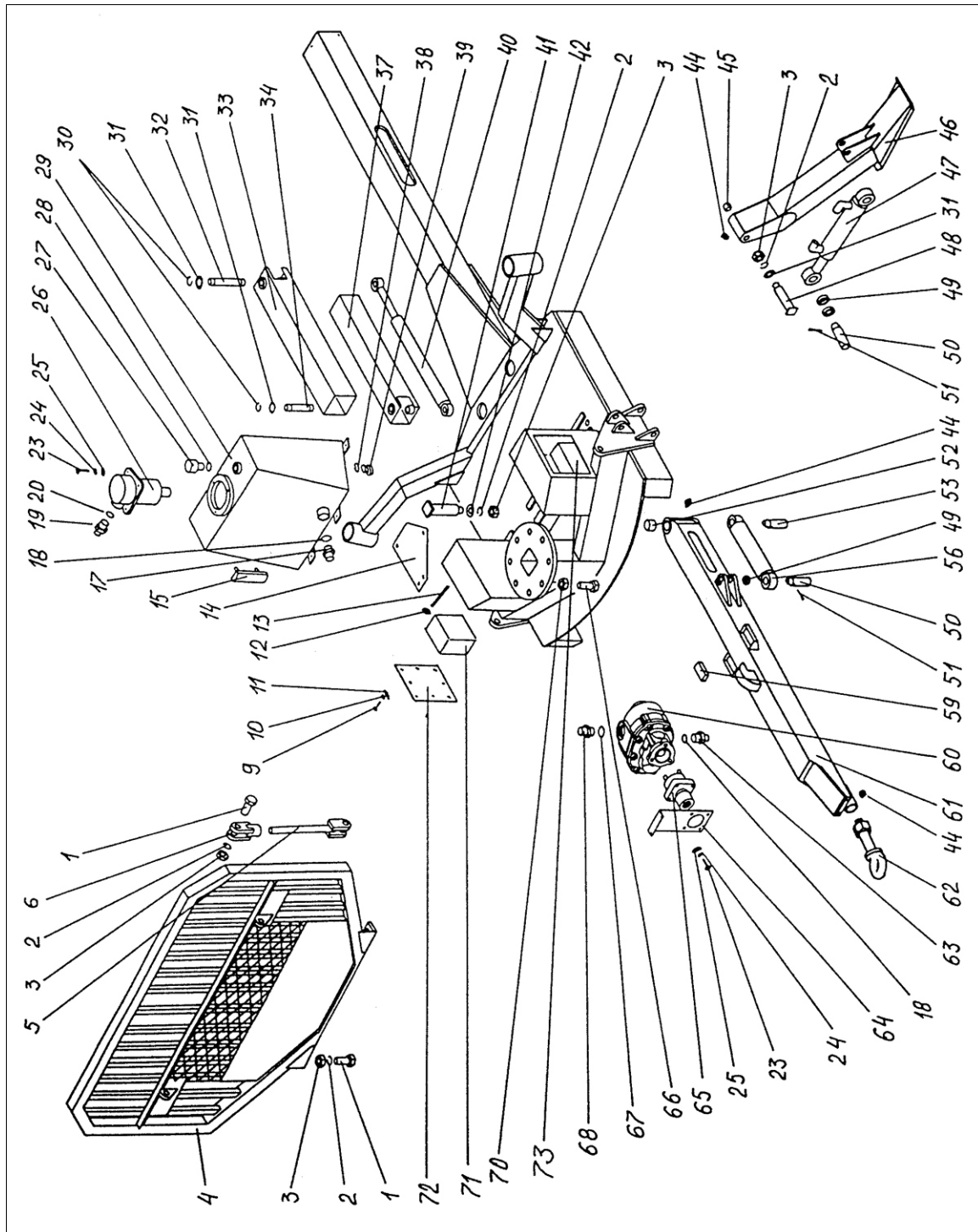
Regular maintenance is essential for troublefree, efficient and economical utilization.

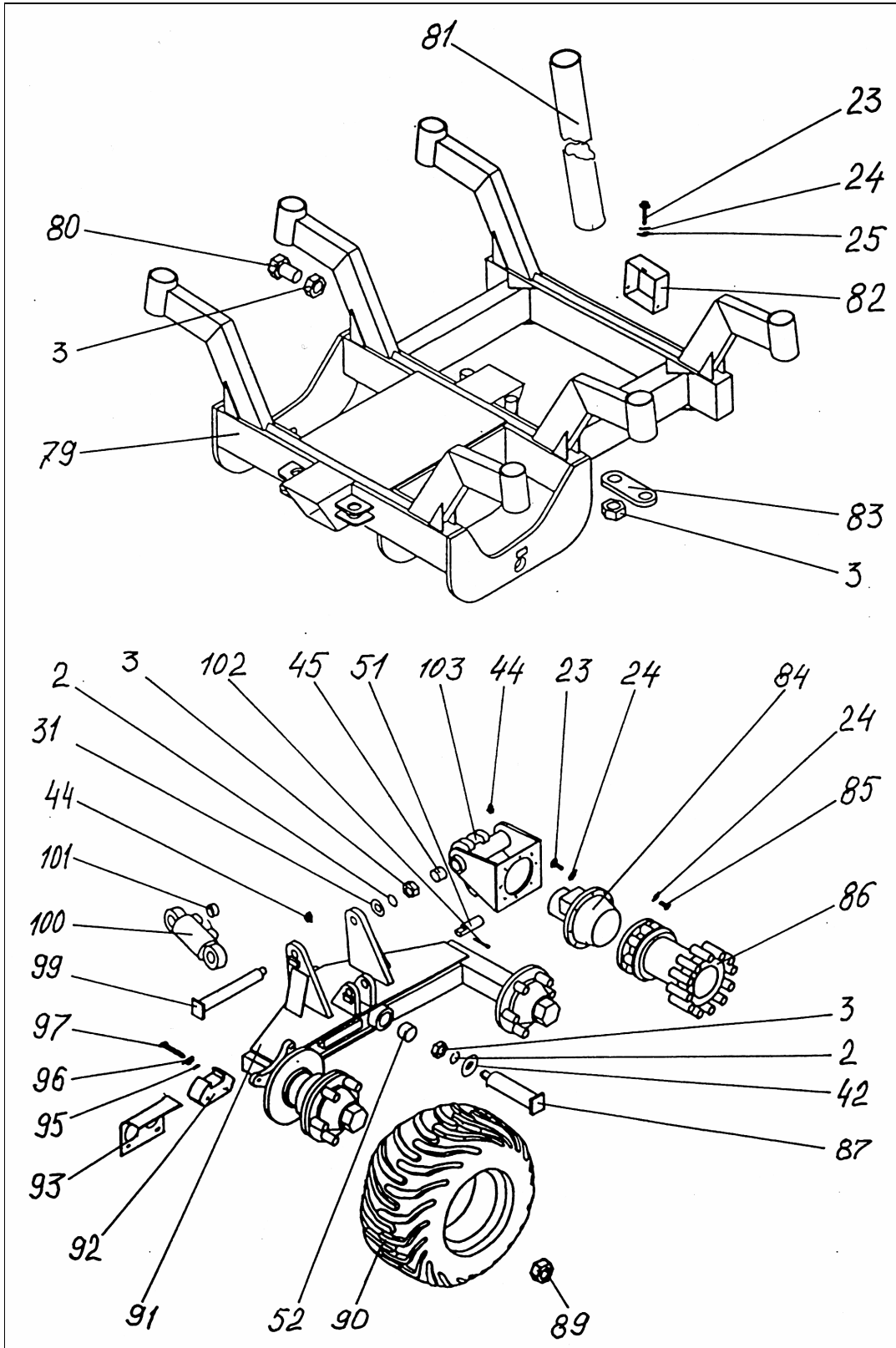
It is the operator duty to familiarize and obey all safety precautions and instructions carefully.



2 TECHNICAL SPECIFICATION

2.1. CONSTRUCTION OF THE TRAILER





**2.2. SPAREPART LIST FOR TRAILER T14 4WD**

Production no FMW 10

| Pos | Art no | Number | Sparepart | Dimension | Pcs |
|-----|--------|----------------------|--------------------|----------------------------|-----|
| 1 | 09001 | | Bolt | M24x80 M6S 8.8 Zn ISO 4017 | 6 |
| 2 | 09002 | | Spring washer | 24,5x40,0x5 DIN 127B | 13 |
| 3 | 09003 | | Nut | M24 M6M-8 Zn ISO 4032 | 16 |
| 4 | 09004 | FMW10-080000.000 | Railing | | 1 |
| 5 | 09005 | FMW10-070003.000 | Tie rod | | 2 |
| 6 | 09006 | FMW10-070004.000 | Lug nut | | 2 |
| 9 | 09007 | | Bolt | M8x16H M6S Zn ISO 4017 | 8 |
| 10 | 09008 | | Spring washer | 8,1x14,8x2 Zn DIN127B | 8 |
| 11 | 09009 | | Plane washer | 8,4x16x1,6 Zn DIN125A | 8 |
| 12 | 09010 | | Nut | M6 M6M8 Zn ISO 4017 | 2 |
| 13 | 09011 | | Screm rod | M24 | 2 |
| 14 | 09012 | FMW10-071006.001 | Casing | | 1 |
| 15 | 09013 | | Level gauge | LG2T | 1 |
| 17 | 09014 | | Adapter | G002-16-16 | 1 |
| 18 | 09015 | | Rubber steel ring | E601-01-16 | 1 |
| 19 | 09016 | | Adapter | G002-12-20 | 1 |
| 20 | 09017 | | Rubber steel ring | E601-01-12 | 1 |
| 23 | 09018 | | Bolt | M10x25 M6S 8.8 Zn ISO 4017 | 26 |
| 24 | 09019 | | Spring washer | 10,2x18,1x2,2 Zn DIN 127B | 34 |
| 25 | 09020 | | Plane washer | 10,5x20x2 Zn DIN 125A | 15 |
| 26 | 09021 | | Return filter | OMTF 200 | 1 |
| 27 | 09022 | | Air breather plug | TRM-2-34 | 1 |
| 28 | 09023 | | Rubber steel ring | E 601-01-12 | 1 |
| 29 | 09024 | FMW10-100900.000 | Oil tank | | 1 |
| 30 | 09025 | | Lock ring | Ø25 DIN 471 A | 8 |
| 31 | 09026 | | Plane washer | 25x44x4 Zn DIN125A | 12 |
| 32 | 09027 | FMW10-000000.001-030 | Pin | | 2 |
| 33 | 09028 | FMW10-070001.000 | Casing | | 2 |
| 34 | 09029 | FMW10-000001.001-020 | Pin | | 2 |
| 37 | 09030 | FMW10-070002.000 | Casing | | 2 |
| 38 | 09031 | | Rubber steel ring | E601-01-08 | 1 |
| 39 | 09032 | | Plug | G501-00-08 | 1 |
| 40 | 09033 | FMW10-100100.000 | Hydraulic cylinder | | 2 |
| | | | 63x32x500 | | |
| 41 | 09034 | FMW10-100004.000-040 | Pin | | 1 |
| 42 | 09035 | MAP13-000000.001 | Washer | | 3 |
| 44 | 09036 | | Grease nipple | 1/8 inch BSP | 10 |
| 45 | 09037 | | Bush | Ø35x30 | 8 |
| 46 | 09038 | FMW10-140000.000 | Stabilizator left | | 1 |
| - | 09039 | FMW10-140000.000-010 | Stabilizator right | | 1 |
| 47 | 09040 | FMW10-100200.000 | Hydraulic cylinder | | 2 |
| | | | 90x40x300 | | |
| 48 | 09041 | MAP13-010050.000-050 | Pin | | 2 |
| 49 | 09042 | MAP13-000000.017 | Distance ring | | 12 |
| 50 | 09043 | MAP13-000000.002 | Pin | | 5 |
| 51 | 09044 | | Split pin | 4x50 Zn DIN 94 | 10 |
| 52 | 09045 | | Bush | Ø50x40 | 6 |



| Pos | Art no | Number | Sparepart | Dimension | Pcs |
|-----|--------|-----------------------|--------------------------|----------------------------|-----|
| 53 | 09046 | MAP13-000000.002-020 | Pin | | 1 |
| 56 | 09047 | MAP13-100100.000 | Hydraulic cylinder | | 1 |
| | | | 90x40x200 | | |
| 59 | 09048 | FMW 10-070000.002 | Glide plastic | | 2 |
| 60 | 09049 | | Gear pump | NF 130/S | 1 |
| 61 | 09050 | FMW 10-050000.000 | Tow | | 1 |
| 62 | 09051 | FMW13-000010.000 | Pull-loop | | 1 |
| 63 | 09052 | | Adapter | G002-08-16 | 1 |
| 64 | 09053 | | Bracket | | 1 |
| 65 | 09054 | | Support for gear pump | SR 3 | 1 |
| 66 | 09055 | | Bolt | M20x80 M6S 8.8 Zn ISO4017 | 8 |
| 67 | 09056 | | Rubber ring | E601-01-24 | 1 |
| 68 | 09057 | | Adapter | G002-16-24 | 1 |
| 70 | 09058 | | Lock nut | M20 Zn DIN 985 | 8 |
| 71 | 09059 | | Hydraulic control | | 1 |
| 72 | 09060 | FMW 10-071007.005 | Cover | | 2 |
| 73 | 09061 | ESH 3635.03 | Electric control | | 1 |
| 79 | 09062 | FMW 10-060000.000 | Wheel support | | 1 |
| 80 | 09063 | | Bolt | M24x60M6S 8.8 Zn ISO 4017 | 1 |
| 81 | 09064 | FMW13-150000.000 | Column | | 8 |
| 82 | 09065 | FMW 10-070005.000 | Plug | | 1 |
| 83 | 09066 | FMW 10-070000.001 | Plate | | 1 |
| 84 | 09067 | | Hydraulic motor | GR200 | 2 |
| 85 | 09068 | | Bolt | M10x35 M6S 8.8 Zn ISO 4017 | 16 |
| 86 | 09069 | FMW 12-220000.000 | Roller | | 2 |
| 87 | 09070 | MAP13-000030.000-030 | Pin | | 2 |
| 89 | 09071 | | Wheel nut | | 24 |
| 90 | 09072 | | Wheel left | 400/60-15,5/14PR Trac | 2 |
| - | 09073 | | Wheel right | 400/60-15,5/14PR Trac | 2 |
| 91 | 09074 | FMW 12-200000.000-030 | Boggie side, left | | 1 |
| - | 09075 | FMW 12-200000.000-020 | Boggie side, right | | 1 |
| 92 | 09076 | | Positive hydr caliper | 2 60 INPI | 2 |
| 93 | 09077 | FMW 13-190000.001-010 | Casing left | | 1 |
| - | 09078 | FMW 13-190000.001 | Casing right | | 1 |
| 95 | 09079 | | Nut | M16 M6M Zn ISO 4080 | 4 |
| 96 | 09080 | | Spring washer | 16,2x27,6x3,5 DIN 127B | 4 |
| 97 | 09081 | | Bolt | M16x70 M6S 8.8 Zn ISO 4017 | 4 |
| 99 | 09082 | MAP13-010050.000-060 | Pin | | 2 |
| 100 | 09083 | FMW 12-100100.000 | Hydraulic cylinder left | | 1 |
| | | | 63x32x30 | | |
| - | 09084 | FMW 12-100100.000-010 | Hydraulic cylinder right | | 1 |
| | | | 63x32x30 | | |
| 101 | 09085 | MAP14-000000.001 | Distance ring | | 8 |
| 102 | 09086 | MAP14-000000.002-010 | Pin | | 4 |
| 103 | 09087 | FMW 12-210000.000-010 | Body left | | 1 |
| - | 09088 | FMW 12-210000.000 | Body right | | 1 |

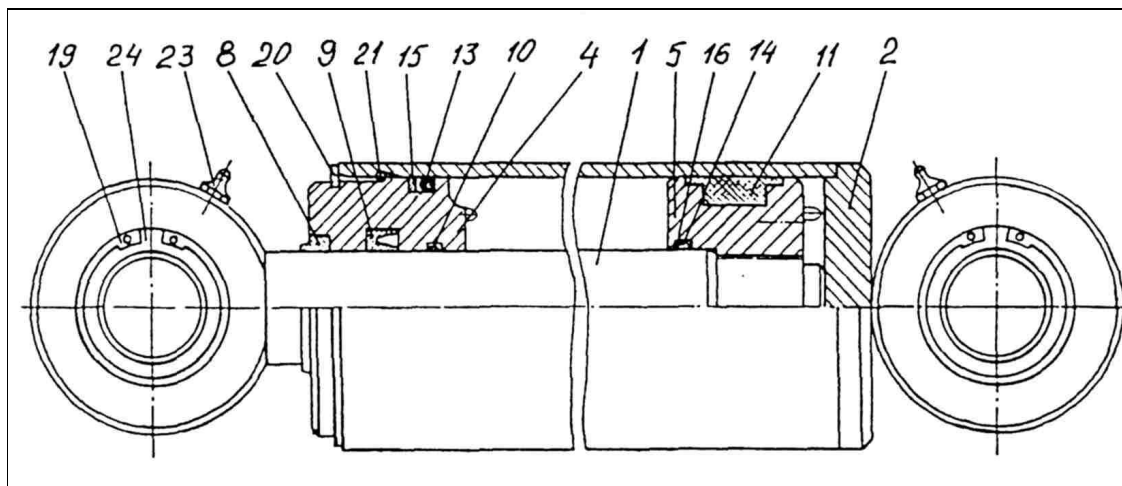
2.3. HYDRAULIC CYLINDERS

Sparepartlist for Hydraulic-cylinder 90/40-200

Frame steering cyl for 9; 10; 12 t trailer

Production no M13-100200.000.

| Pos | Art no | Number | Sparepart | Dimension | Pcs |
|-----|--------|----------------|---------------|----------------------|-----|
| 1 | 56201 | M13-100120.000 | Piston rod | | 1 |
| 2 | 56202 | M13-100110.000 | Tube | | 1 |
| 4 | 56203 | F13-100100.001 | Front bush | | 1 |
| 5 | 56204 | F13-100100.002 | Piston | | 1 |
| 8 | 56205 | | Scrape-ring | AS40-50-7-10 | 1 |
| 9 | 56206 | | Sealing | NI 300 40-55-10 | 1 |
| 10 | 56207 | | Buch | DFI 40-45-5,5 | 1 |
| 11 | 56208 | | Sealing | Simco 5x2 90-70-33,8 | 1 |
| 13 | 56209 | | O-ring | 79,2x5,7 | 1 |
| 14 | 56210 | | O-ring | 40,2x3,0 | 1 |
| 15 | 56211 | | Sealing | SRA 90-5,1-2 | 1 |
| 16 | 56212 | | Sealing | SRI 40-2,6-1,5 | 2 |
| 19 | 56213 | | Lock-ring | SGH 55 | 2 |
| 20 | 56214 | | Lock-ring | SGA 87 | 1 |
| 21 | 56215 | | Lock-ring | N° 72310 | 1 |
| 23 | 56216 | | Grease-nipple | 1/8" | 2 |
| 24 | 56217 | | Joint bearing | GE35ES | 2 |



Sparepartlist for Hydraulic-cylinder 90/40-300

Stabilizer cyl for Trailer T14 4WD

Production no F10-100400.000

| Pos | Art no | Number | Sparepart | Dimension | Pcs |
|-----|--------|----------------|---------------|----------------------|-----|
| 1 | 56401 | F13-100410.000 | Piston rod | | 1 |
| 2 | 56402 | F10-100220.000 | Tube | | 1 |
| 4 | 56403 | M13-100100.001 | Front bush | | 1 |
| 5 | 56404 | M13-100100.002 | Piston | | 1 |
| 8 | 56405 | | Scrape-ring | AS40-50-7-10 | 1 |
| 9 | 56406 | | Sealing | NI 300 40-55-10 | 1 |
| 10 | 56407 | | Buch | DFI 40-45-5,5 | 1 |
| 11 | 56408 | | Sealing | Simco 5x2 90-70-33,8 | 1 |
| 13 | 56409 | | O-ring | 79,2x5,7 | 1 |
| 14 | 56410 | | O-ring | 40,2x3,0 | 1 |
| 15 | 56411 | | Sealing | SRA 90-5,1-1,5 | 1 |
| 16 | 56412 | | Sealing | SRI 40-2,6-1,5 | 2 |
| 19 | 56413 | | Lock-ring | SGH 55 | 2 |
| 20 | 56414 | | Lock-ring | SGA 87 | 1 |
| 21 | 56415 | | Lock-ring | N°72290 | 1 |
| 23 | 56416 | | Grease-nipple | 1/8" | 2 |
| 24 | 56417 | | Joint bearing | GE35ES | 2 |

Sparepart list hydraulic cyl 63/32-500

Moving wheel support for Trailer T14 4WD

Production no F10-100100.000

| Pos | Art no | Number | Sparepart | Dimension | Pcs |
|-----|--------|----------------|---------------|----------------------|-----|
| 1 | 55701 | F10-100120.00 | Piston rod | | 1 |
| 2 | 55702 | F10-100110.00 | Tube | | 1 |
| 4 | 55702 | M13-100300.001 | Front bush | | 1 |
| 5 | 55703 | M13-100300.002 | Piston | | 1 |
| 8 | 55703 | | Scraper | AS 32-45-7-10 | 1 |
| 9 | 55704 | | Sealing | NI300 32-47-10 | 1 |
| 10 | 55704 | | Bush | DFI 32-35,1-4,0 | 1 |
| 11 | 55705 | | Sealing | SIMKO 5x2 63-47-29,8 | 1 |
| 13 | 55705 | | O-ring | 52,2x5,7 | 1 |
| 14 | 55706 | | O-ring | 32,2-3,0 | 1 |
| 15 | 55706 | | Sealing | SRA 63-5,1-1,5 | 1 |
| 16 | 55707 | | Sealing | SRI 32-2,6-1,0 | 1 |
| 19 | 55707 | | Lock ring | SGH 42 | 2 |
| 20 | 55708 | | Lock ring | SGA 60 | 2 |
| 21 | 55708 | | Lock ring | No 72240 | 1 |
| 23 | 55709 | | Grease nipple | 1/8" | 1 |
| 24 | 55709 | | Joint bearing | GE25ES | 2 |

**Sparepart list hydraulic cyl 63/32-30 (Roller cyl Trailer T14 4WD)**

Production no F12-100100.000 left cylinder

Production no F12-100100.000-010 right cylinder

| Pos | Art no | Number | Sparepart | Dimension | Pcs |
|-----|--------|--------------------|-----------------|----------------------|-----|
| 1 | 55201 | F12-100201.000 | Piston rod | | 1 |
| 2 | 55202 | F12-100101.000 | Tube, left | | 1 |
| 2 | 55202 | F12-100101.000-010 | Tube, right | | 1 |
| 4 | 55203 | M13-100300.001 | Front bush | | 1 |
| 5 | 55203 | M13-100300.002 | Piston | | 1 |
| 8 | 55204 | | Scraper | AS 32-45-7-10 | 1 |
| 9 | 55204 | | Sealing | NI300 32-47-10 | 1 |
| 10 | 55205 | | Buch | DFI 32-35,1-4,0 | 1 |
| 11 | 55205 | | Sealing | SIMKO 5x2 63-47-29,8 | 1 |
| 13 | 55206 | | O-ring | 52,2x5,7 | 1 |
| 14 | 55206 | | O-ring | 32,2-3,0 | 1 |
| 15 | 55207 | | Protection ring | SRA 63-5,1-1,5 | 1 |
| 16 | 55207 | | Protection ring | SRI 32-2,6-1,0 | 2 |
| 19 | 55208 | | Stopper ring | SGH 42 | 2 |
| 20 | 55208 | | Stopper ring | SGA 60 | 1 |
| 21 | 55209 | | Stopper ring | N 72240 | 1 |
| 23 | 55209 | | Grease nipple | 1/8" | 2 |

2.4. TECHNICAL DATA

| | |
|--|-------------|
| Loading capacity, t | 14 |
| Loading area, m ² | 2,6 |
| Ground clearance, mm | 530 |
| Center beam, mm | 160x160x16 |
| Axle, mm | 70x70 |
| Length, m | 5,8 |
| Width, m | 2,3 |
| Tyres | 500/60-15,5 |
| Tyre pressure, bar | 3,3 — 4,8 |
| Max operation pressure for traction, bar | 175 |
| Max operation pressure for brakes, bar | 145 |
| Speed with pump, 50 l/min, km/h | 3 |
| Weight, kg | 2 300 |

3 OPERATING INSTRUCTIONS

3.1. SAFETY

- ❑ Read the manual before operating the trailer. Neglecting the instructions can cause danger to operator and machine.
- ❑ Operator must have sufficient training for using this machine.
- ❑ Do not use the trailer until you are familiar with the controls.
- ❑ Before loading works, ensure there is no one in danger zone (20 m).



DON'T FORGET TO LIFT THE SUPPORT LEGS UP BEFORE MOVING TO ANOTHER PLACE.

- ❑ Operator must have full visibility all over working area.
- ❑ The vehicle must be on stable ground and positioned securely. Support legs must be used while loading to prevent the trailer tipping over.
- ❑ Use vehicles parking brakes during the loading.
- ❑ Do not exceed maximum loading values.



WHEN TRACTION IS ENGAGED, TRAILER CANNOT BE PULLED FASTER THAN PUMP OUTPUT ENABLES. MAXIMUM TRACTION SPEED AT PUMP CAPACITY 50 L/MIN IS 3 KM/HOUR.

3.2. INSTRUCTIONS FOR SAFE OPERATION

SUPPORTING THE TRAILER

- Always engage the base machines parking brakes before loading. If necessary put some obstacles in front of wheels.
- Always use support legs. Make sure the trailer is situated at firm terrain.



DO NOT USE SUPPORT LEGS FOR LIFTING THE LOAD. USE SUPPORT LEGS ONLY FOR SUPPORTING THE TRAILER.

MANIPULATING THE HYDRAULIC FUNCTIONS



NEVER CONTROL THE HYDRAULIC FUNCTIONS FROM ONE EXTREME POSITION TO ANOTHER WITH SPEED! THIS MAY CAUSE OVERTURNING THE TRAILER.

- Avoid loading on a slanted ground or at least work with extreme cautiousness.
- When working on a slanted surface load less than usual.

ALWAYS ENGAGE THE BASE MACHINES PARKING BRAKES BEFORE LOADING WORKS. IF NECESSARY PUT SOME OBSTACLES IN FRONT OF WHEELS.



3.3. WORKING AT EXTREME CONDITIONS

Recommended working temperature range for trailer is **-30°C up to +40°C**.

Note that working at low temperatures accelerates hydraulic gaskets wearing and increases hydraulic hoses exposure to damages and steel constructions exposure to brittle fracture. Before start working at cold conditions let the oil circulate freely through system a few minutes.

Slowly drive every action through several times so that gaskets come pliable before they receive full pressure.

At exceptionally warm conditions beware of hydraulic oils excessive heating. Too high oil temperature (higher +80°C) degrades oil and damages gaskets.

4 MAINTENANCE INSTRUCTIONS

4.1. SAFETY

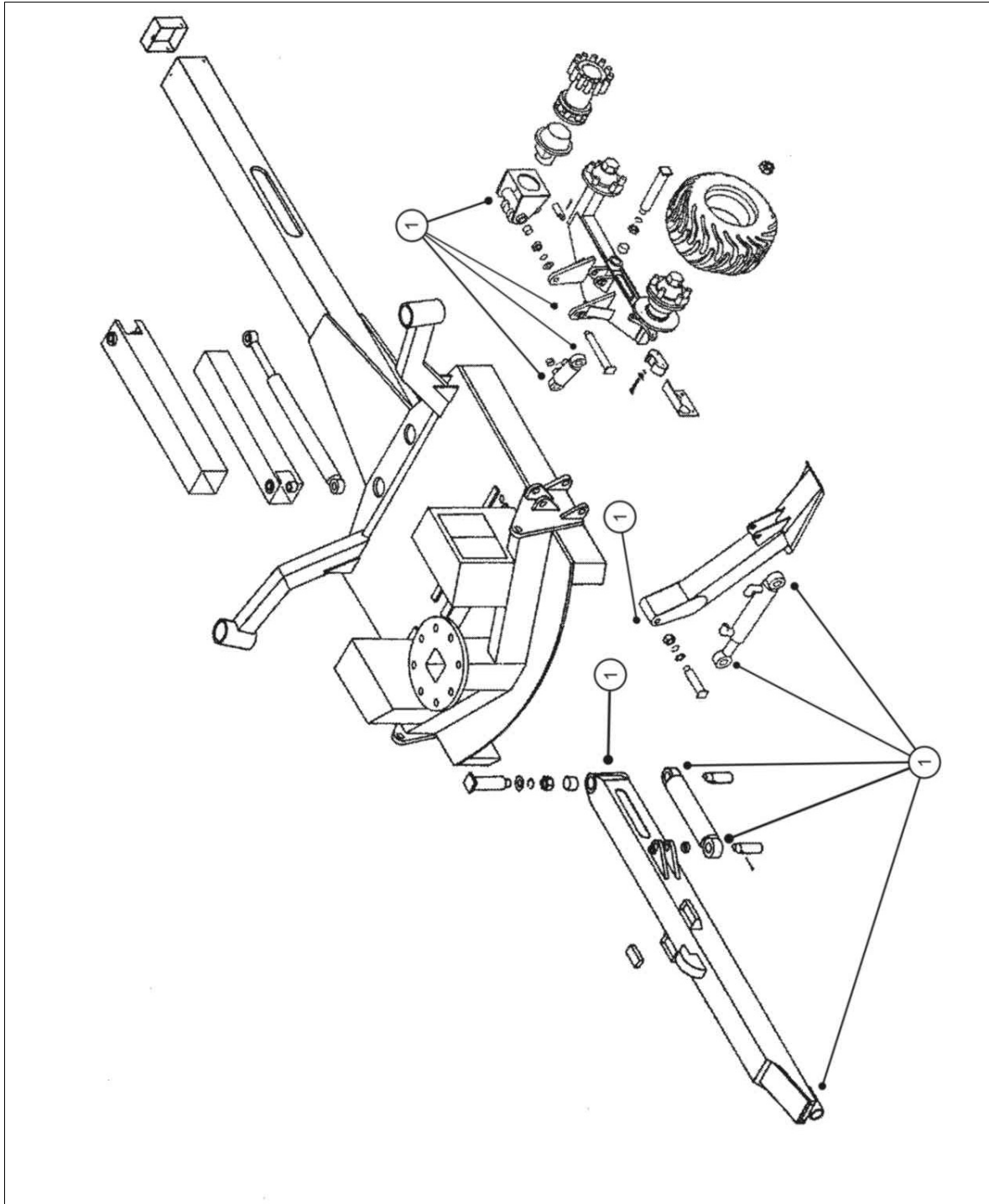


READ THE MAINTENANCE INSTRUCTIONS BEFORE SERVICE OR MAINTENANCE WORKS. DO NOT ATTEMPT TO PERFORM SUCH MAINTENANCE WORKS WHICH YOU DO NOT FULLY UNDERSTAND

- Repair all safety endangering defects immediately.
- Check that the trailer is on a level and stable ground.
- Use vehicles parking brake during maintaining the trailer. Make sure that nobody can unnecessarily have access to trailers or vehicles controls.
- Never attempt to do maintenance works on the hydraulic system before you are sure there is no pressure.
- Do not tighten or repair a leaking hydraulic couplings while the system is pressurized.
- Never attempt to localize a leakage from hoses or connections by feeling with hand. The high pressure oil jet can penetrate skin and cause serious burns and damages. High pressure oil is also highly flammable.
- Do not work under such device that is sustained only by hydraulics. During maintenance use supports.
- Avoid getting oil into eyes. Use safety goggles and gloves.



4.2. LUBRICATION



RECOMMENDED GREASES

| BRAND | TYPE |
|--------------|--|
| BP | Energrease LS-EP2, L2M |
| ESSO | Beacon EP2, Multipurpose GR Moly |
| MOBIL | Mobilux EP2, Mobil Grease MP Special |
| SHELL | Alvania EP Grease 2 |
| UNION/TEXACO | Marfak Multi-Purpose 2, Molytex Grease 2 |



**PAY SPECIAL ATTENTION TO THE TOWBAR CYLINDER.
GREASE IT AFTER EVERY 50 WORKING HOURS**

SAFETY

- ❑ Before any lubrication or service works read these instructions and follow recommended procedures.
- ❑ When lubrication or servicing the trailer, turn off the vehicle engine.
- ❑ Ensure regularity of lubrication by following the lubricating schedule.
- ❑ Keep your hands, feet and loose clothing away from power driven parts.
- ❑ Inspect equipment daily for signs of failure or beginning of failure.
- ❑ Use proper tools for service.
- ❑ Keep flammable material away from heat, sparks and open fire.
- ❑ Do not let oil get into nature. Oil spilled into ground pollutes environment. It is recommended to use vegetable-based oil instead of mineral oil.
- ❑ Pressurized oil can penetrate skin and cause serious injuries.
- ❑ Hot oil and oil spray can be hazardous. Small amounts swallowed or inhaled do not usually cause intoxication. Old oil is more dangerous than new.
- ❑ Use safety goggles. If oil has got into eyes flush them with cool water, after which go to the doctor.
- ❑ Although the occasional skin exposure with oil is not dangerous it is recommended to use protective gloves and clothing.